



SKYWAY

Progress Through Trusted and Professional Services

www.skywaysa.com



TABLE OF CONTENT

INTRODUCTION 03

INTRODUCTION 04

VISION / MISSION / VALUES 05

OUR SERVICES 06

SEISMIC WORK 07

DRILLING WORK 08

CONSTRUCTION WORK 09

ELECTRICAL WORK 10

ELECTRICAL WORK 11

MECHANICAL WORK 12

MECHANICAL WORK 13

MAINTENANCE WORK 14

MAINTENANCE WORK 15

CLEANING SERVICES 16

CLEANING SERVICES 17

OUR PROJECTS 18

OUR CONTACT INFORMATION 19

OUR CONTACT INFORMATION 20

INTRODUCTION



SKY WAY

INTRODUCTION

Skyway is one of the leading foreign worker solutions providers in KSA. We takes pride in calling itself one of the very few comprehensive solutions providers or a “one-stop” avenue in the provision of foreign workers supply. We provide skilled & Unskilled qualified manpower to Gulf (Middle East) , Far East and other parts of the world in multiple sectors of industries like Engineering, Construction, Labors(Skilled, unskilled and semi-skilled) , Maintenance Contracts , Mechanical Works, Electrical Works, etc.

Skyway remains committed in catering to the labour needs of various industries, as it strives to become the No. 1 player in the foreign workers management services market.

Our customers includes electrical and electronic manufacturers, shopping centres, food and beverage service providers, hospitality and convenience stores. Moving forward, Skyway also plans to venture into the manufacturing and services sectors.





OUR VISION

OUR MISSION

OUR VALUES

Our vision is to provide our clients better and timely services and sustainable manpower solutions by adopting automated and sophisticated methods.

Our mission is to turn the vision into reality for our clients by providing state of the art facilities and preminent services.

- Paramount and Hassle Free Services
- Customer ease and Satisfaction
- Establishing Better Coordination and Customer Relationship
- Ensure Clarity and Candor

OUR SERVICES



SKY WAY

SEISMIC WORK

- **Light Driver**
- **Mechanic**
- **Line Labor**
- **GPS Operator**
- **Vibrator Operator**
- **Bulldozer Operator**
- **Auto Electrician**
- **Heavy Duty Driver**
- **Geophone Loader**
- **Geophone Repair**
- **Vibro Pusher**
- **Line Boss**
- **Vibrator Mechanic**
- **Electrician**
- **Mechanic Helper**
- **Line Foreman**
- **Trouble Shooter**
- **Ass HSE**
- **Camp Boss**
- **Asst. Camp Boss**
- **Radio Operator**



DRILLING WORK

- **Driller**
- **Asst Driller**
- **Safety Man**
- **Derrick man**
- **Floor man**
- **Mud Boys**
- **Roustabout**
- **Drivers**
- **Watch Man**
- **Welders**



CONSTRUCTION WORK

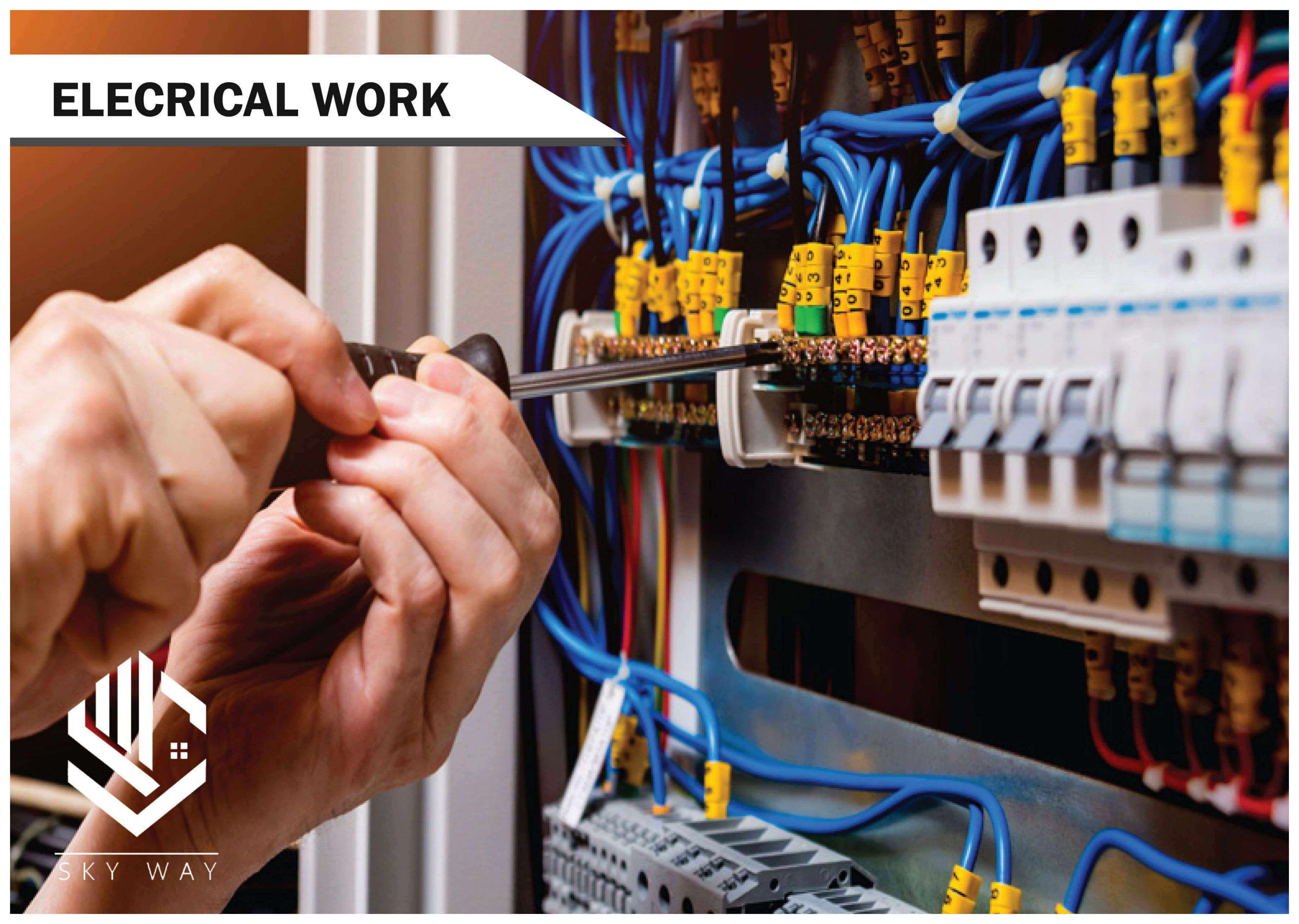
- Scaffolders
- Skilled Labor
- Plumbers
- Pipe Fitters
- Equipment Operators
- Masons
- Safety Ochers
- Drivers
- Welders 4G,5G,6G
- Painters
- Electricians
- Mechanics
- Riggers
- Fabricators
- Steel Fixers
- Carpenters



ELECTRICAL WORK



SKY WAY



INSTALLATION SERVICES

Skyway is able to design, supply and install a full range of structured fibre optic and Cat 6 UTP cabling systems for telephone (voice) and data communications. Key services include:

- Structured data cabling – Cat5, 5e, 6 & 6A
- Data Infrastructure – Equipment racks, switching and patching
- Voice distribution infrastructure - Main Distribution
- Frames, Building/Floor Distributors
- Fibre Optic - Cabling, terminations, fusion splicing & media conversion hardware.
- Data Centres

PREVENTATIVE MAINTENANCE

To minimise the risk of down time, Skyway is able work closely with your maintenance team to develop a scheduled preventative maintenance program that is tailored to your specific requirements.

As part of this service, our team will analyse your current electrical installation, diagnose potential threats to your operation and make recommendations for action accordingly. In response to your site evaluation, a maintenance package would be proposed containing any combination of the following areas:

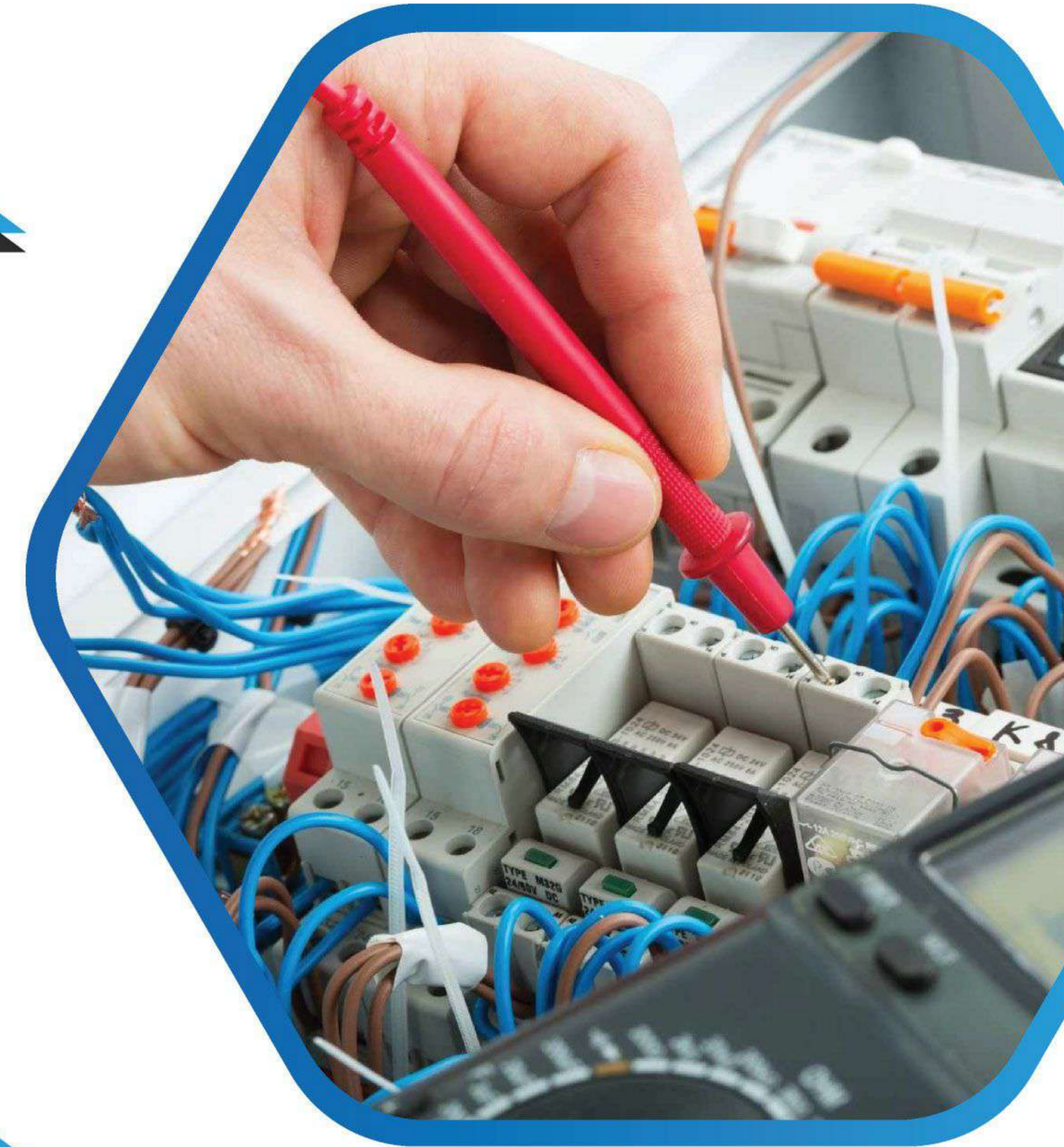
- Exit & emergency light testing;
- Testing and tagging of electrical equipment;
- Thermographic testing of switchboards;
- Residual Current Device (RCD) testing;
- Lamp replacement programs;
- Earth leakage circuit breaker testing; and
- Light level testing.

EMERGENCY RESPONSIVE SERVICE

For clients with critical power supply requirements requiring 24/7 uptime, we also offer an emergency response maintenance service. This value-added service allows us to provide these clients with the surety that any operational downtime can be minimised. This service has been particularly welcomed by our clients within the manufacturing, mining and health sectors.

MAINTENANCE SERVICES

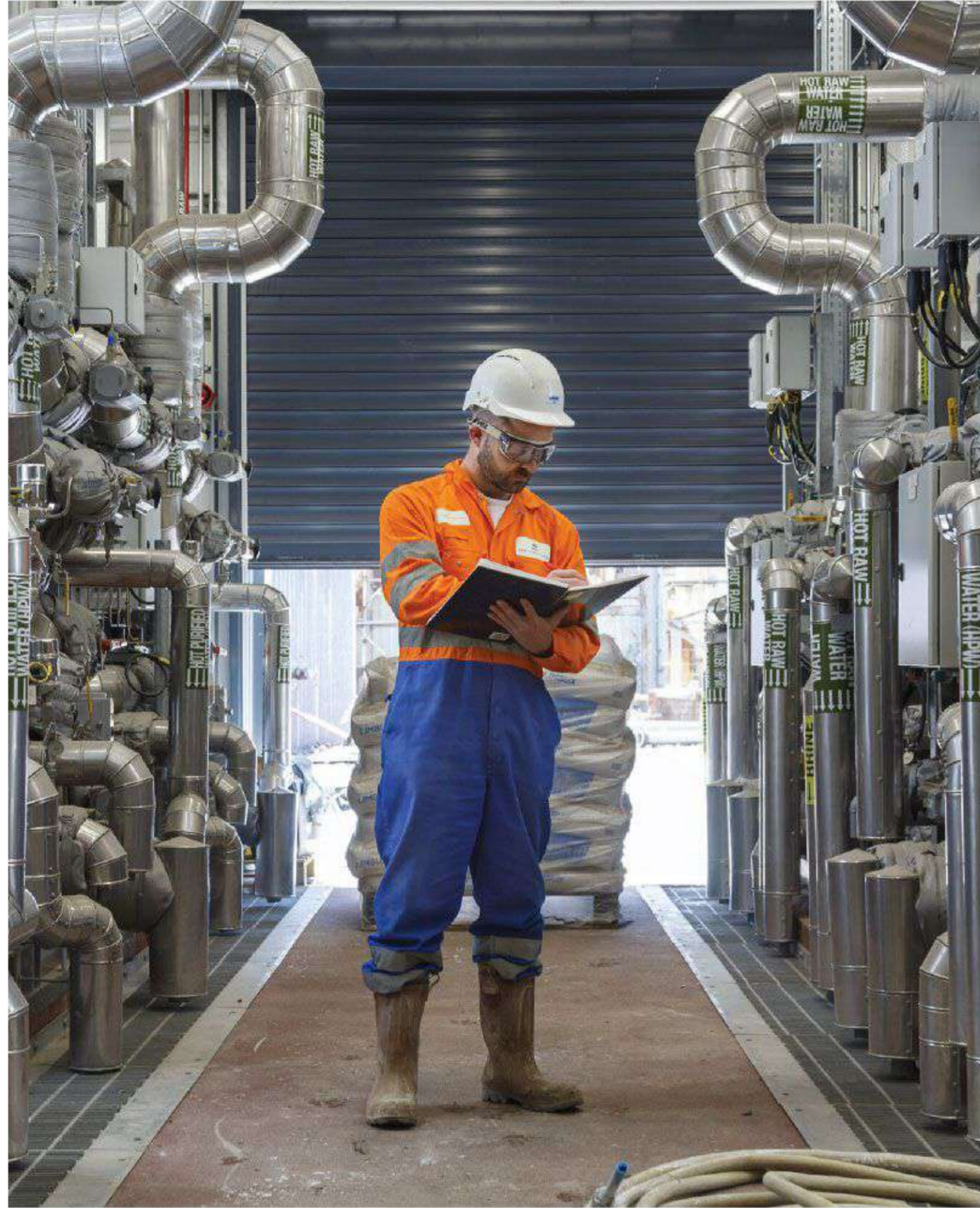
- Conducting routine inspections of premises and equipment.
- Performing preventative maintenance.
- Handling basic repairs and maintenance.
- Overseeing contractors when professional repairs are necessary.
- Diagnosing mechanical issues and correcting them.



MECHANICAL WORK

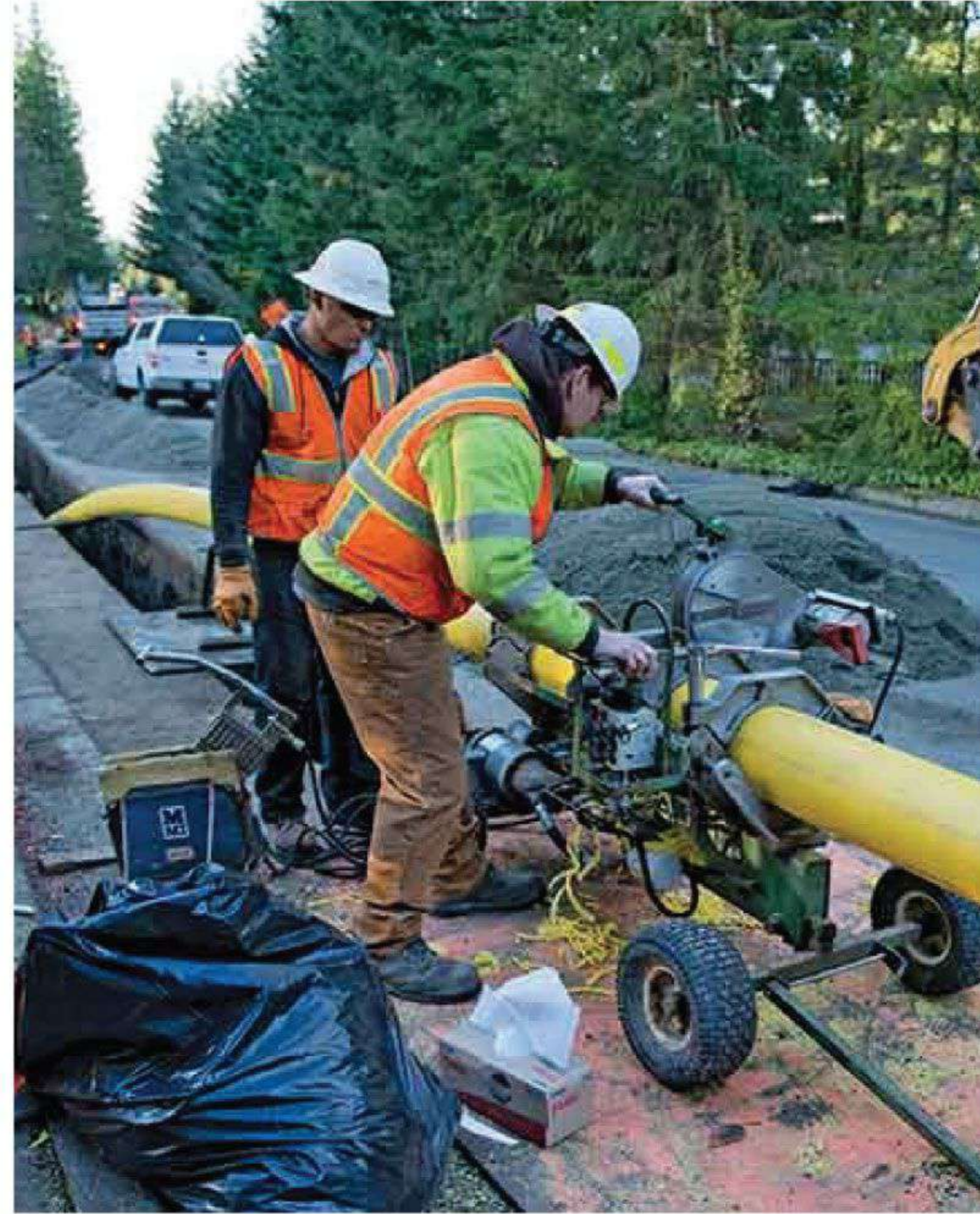


SKY WAY



COMMERCIAL & INDUSTRIAL SERVICES

We provide specialized Commercial & Industrial Mechanical Services which include Heating systems, Plumbing, Gas piping installations, Ventilation, Solar installations, Hot/Cold/Mains Water supply. The company's expertise includes industrial, commercial, high-end domestic, and sustainable installations. We have delivered the mechanical scope up to quality standards for a range of clients and building contractors.



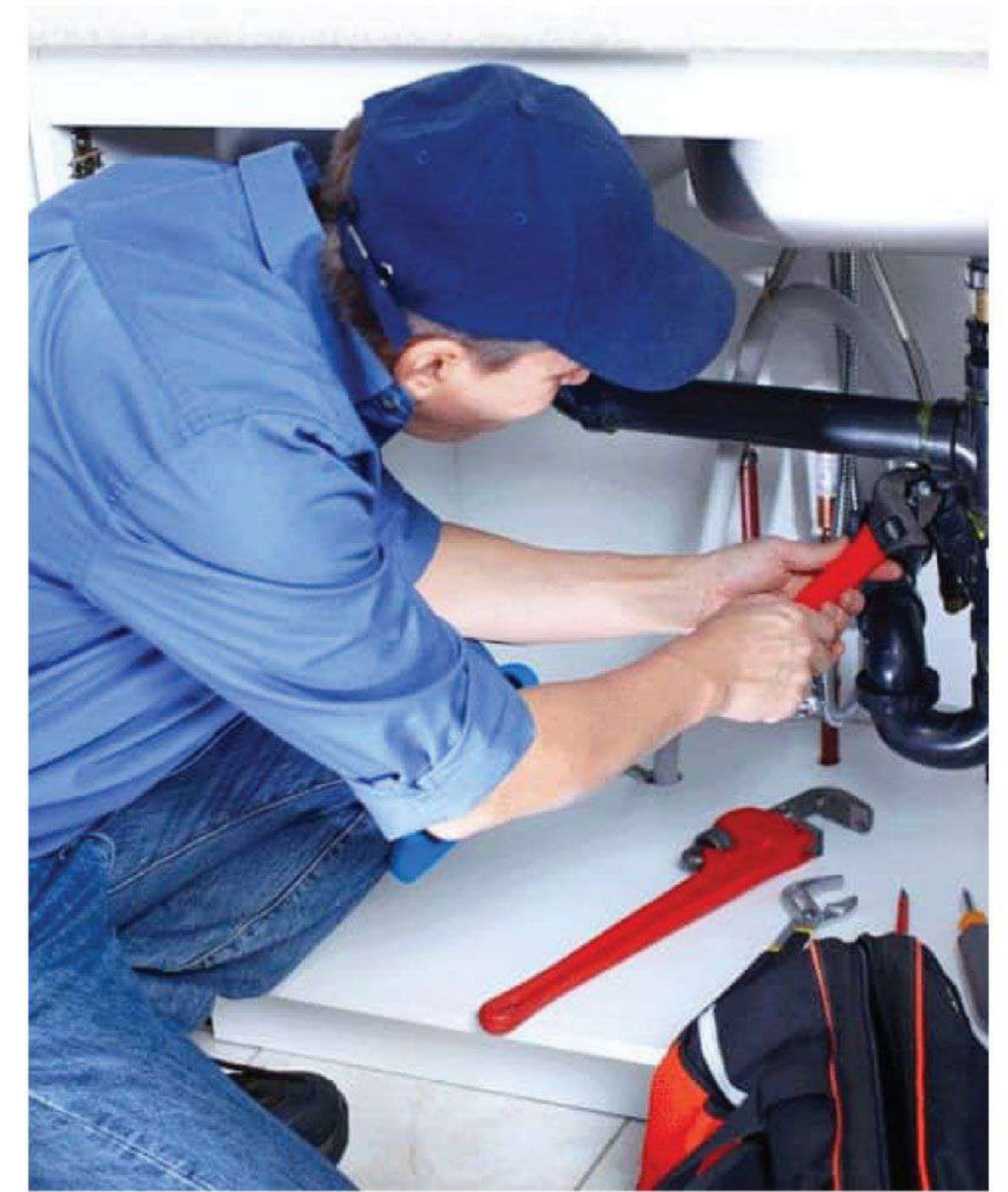
COMPLETE NATURAL GAS INSTALLATION

SKYWAY provides complete natural gas installation services which includes Installing, repairing, and maintaining gas meters, regulators, gas lines, and gas appliances. Testing and replacing defective equipment. Attending to gas-escape calls and assisting in the investigation of gas fires and explosions. Advise clients on safety features and maintenance of gas units. Converting cars or appliances to use natural gas fuels. Preparing work reports. Reading and interpreting drawings and blueprints.



RAINWATER HARVESTING SYSTEM

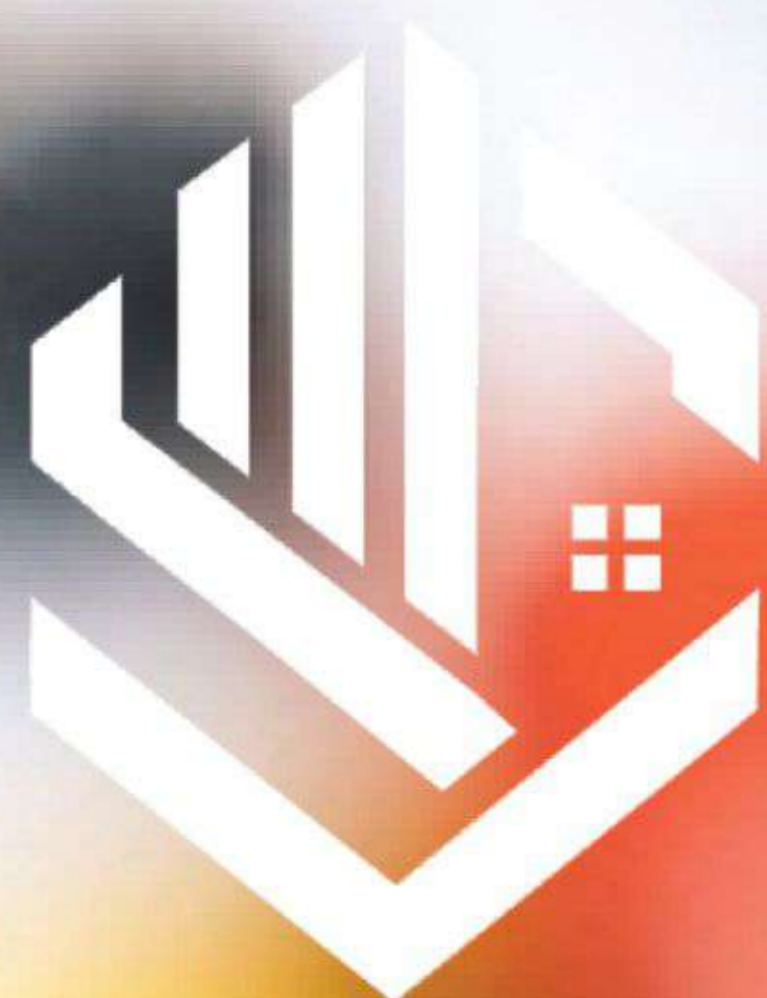
Rainwater harvesting system, also called rainwater collection system or rainwater catchment system, is a technology that collects and stores rainwater for human use. Rainwater harvesting systems range from simple rain barrels to more elaborate structures with pumps, tanks, and purification systems. Here at SKYWAY, we serve complete Rainwater harvesting systems and your satisfaction is our priority.



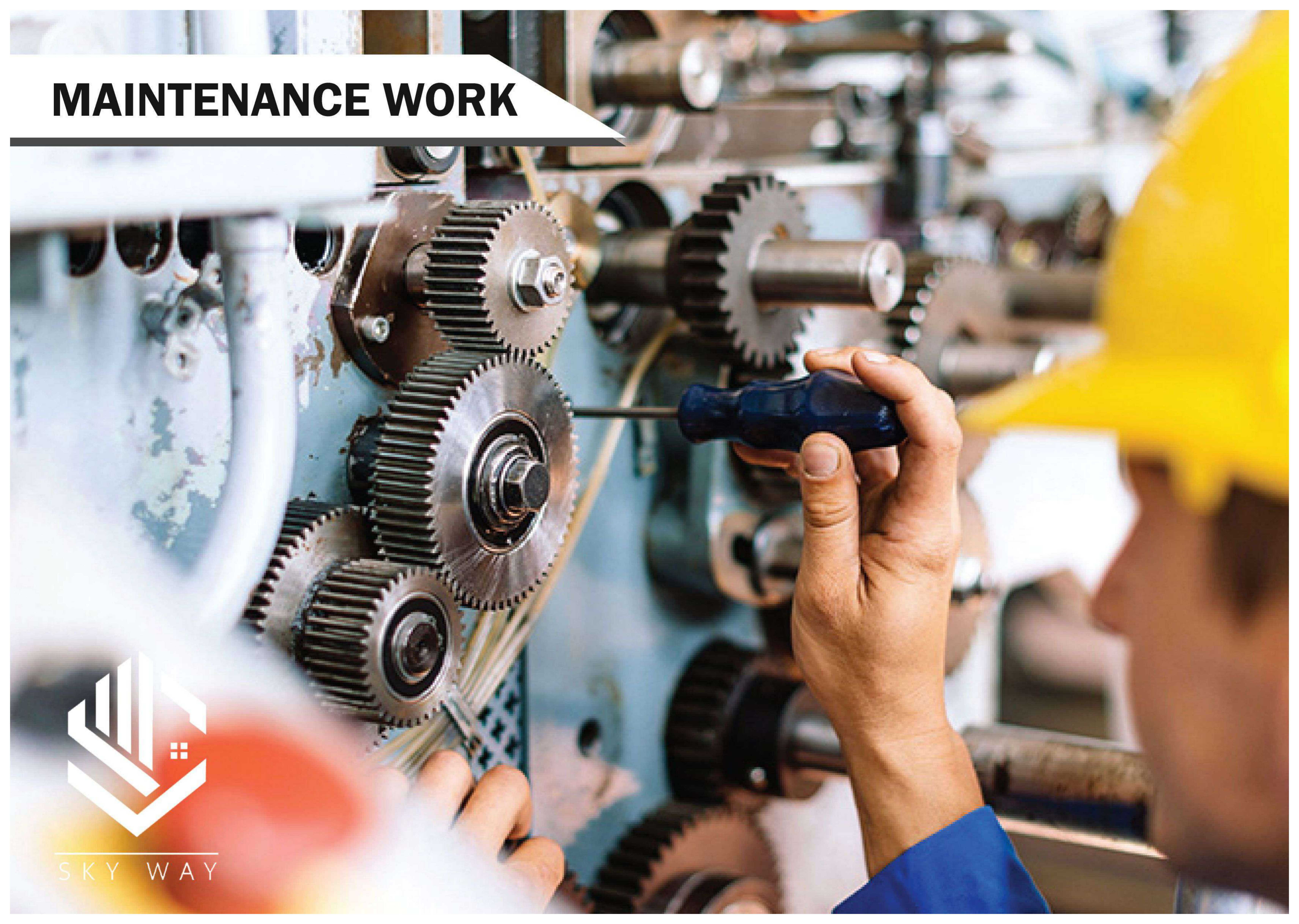
FULL SANITARY WARE PACKAGE

SKYWAY provides a Full sanitary ware package that includes, Water treatment system, a Water softening plant, an Automatic Hydro pneumatic water pumping system, Hot & cold water piping system, Soil & wastewater disposal system, Rainwater installation, Automatic sewage transfer pumps, Automatic stormwater transfer pumps, Installation of sanitary wares.

MAINTENANCE WORK



SKY WAY



MAINTENANCE WORK

Maintenance work means any work involving repair to, renewal, replacement, and associated alterations or removal of, the whole or any part of the Infrastructure (other than Enhancements) and includes any inspections or investigations of the Infrastructure. SKYWAY provides expert maintenance services, We keep buildings, their grounds, and any equipment or machines housed there organized, clean, and in working order. We provide additional assistance to visitors and other staff as needed. You can trust us completely for maintaining your facilities.

WHAT WE DO FOR MAINTENANCE

Performing inventory on repair supplies, Keeping repair tools and supplies clean and organized, Ensuring all safety systems are functioning properly, including smoke and carbon monoxide detectors, Completing safety checks on systems and equipment, Performing general maintenance tasks for the building or buildings, such as window washing, drywall repair, plastering, carpentry, flooring repair, painting, Detecting, identifying and repairing building issues, like basic problems with the building's electrical, plumbing, and HVAC systems



CLEANING SERVICES



SKY WAY

CLEANING SERVICES

At SKYWAY Services, we understand the importance of a clean and tidy home or workplace. That's why we provide professional cleaning services to ensure your property is spotless and hygienic. Our skilled team of cleaners is committed to delivering tailored solutions to meet your specific needs, leaving your space fresh, organized, and inviting. With our reliable and affordable cleaning services, you can enjoy a cleaner, healthier environment without the hassle.



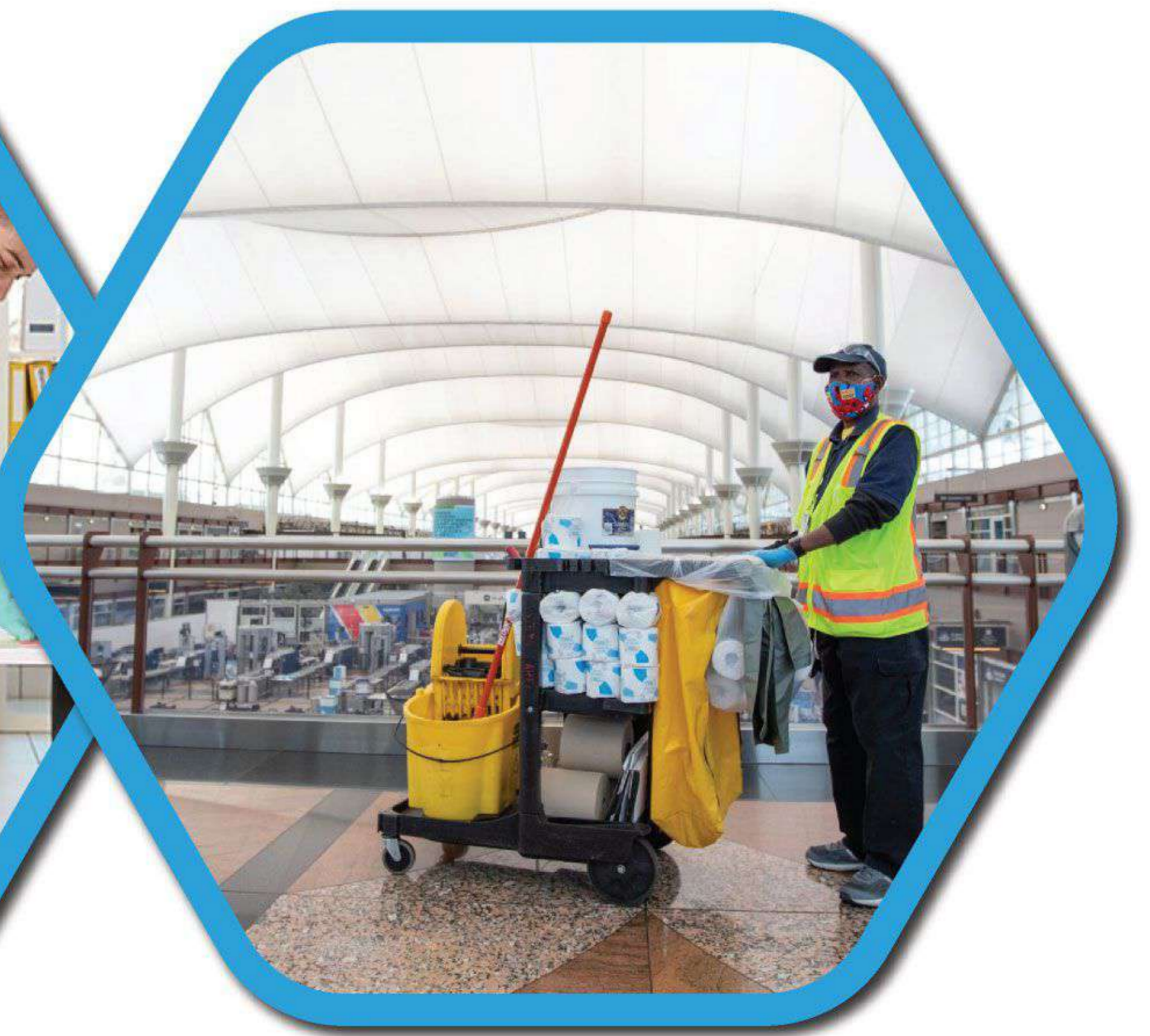
HOSPITALS



SCHOOLS

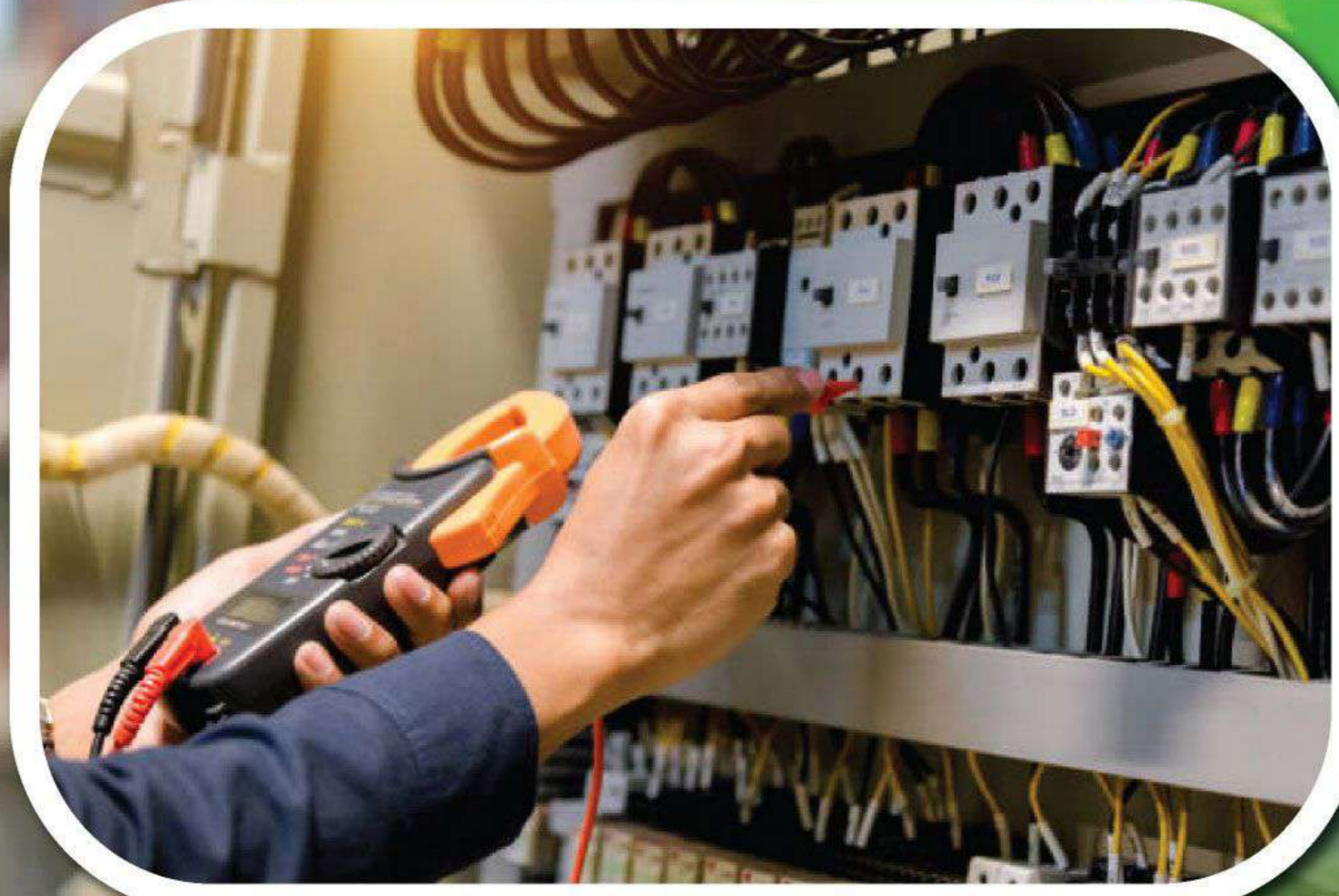


OFFICES



AIRPORTS

OUR PROJECTS





Mob :050 10 82 654



info@skywaysa.com



www.skywaysa.com



**Street Al-Khabra, Building # 3518 1st
Floor Unit # 3, Al Azizah Distt, Riyadh
14514 Kingdom of Saudi Arabia**



SKY WAY

